



HERONGATE WOOD

FUNERAL DIRECTORS & WOODLAND CEMETERY

About Us

Introduction

Herongate Wood is an independent family owned Green cemetery and Funeral Directors. With the help of all the loved ones laid to rest at Herongate Wood, they are helping to turn grazing land into a thriving woodland and living memorial for generations to come.

The Future

Your loved one will rest forever in the beautiful bluebell wood that is being created. Young trees are planted across the area used for burials, extending the wood and allowing the bluebells to thrive. To protect the developing wood we make a payment on behalf of each burial into the Woodland and Wildlife Trust. The trust was created solely to care for Herongate Wood when it has reached capacity.





The Cemetery

As the cemetery develops and matures we have a permanent record of each burial that has taken place. We have given them all a unique plot number, which we record in our burial register. The burial register records a plan of the entire burial site and the exact location of each plot.

Around you and those you love, a beautiful landscape will be created and preserved.



Herongate Wood Cemetery Map

Key

- Welcome Centre
- Hall of Remembrance
- Toilets



Cemetery Map

Scan this QR code to help find your loved ones plot.





Our Services

Hall of Remembrance

We have our own Hall of Remembrance at Herongate Wood for Burial and Cremation Services. Our Hall of Remembrance provides seating for up to 54 people, together with room for around 35 standing. We make no charge for the use of our Hall of Remembrance for funerals arranged through ourselves, or through our sister company, Adam & Greenwood Funeral Home.

Unique Funerals

In fine weather we can offer open-air funeral services at Herongate Wood. They are held on our paved terrace which overlooks the sites pond. We can also arrange a marquee for funerals. A marquee allows space for 100 plus attendees, so is ideal for larger services.

Burial Grounds

Herongate Wood can accommodate full Burials, Ashes Interment: Single or Family Ashes plots and Ashes Scatterings.

Memorials

In addition to a personalised permanent granite grave plaque, we also offer an array of Memorials to suit every families needs.

Funeral Services

Herongate Wood has experienced Funeral Directors based at the cemetery who are able to help families arrange a funeral for their loved one.

Cemetery Charges

For all our current charges please scan the QR code.





Grave Maintenance

By our Ground Staff

We do not charge families for the maintenance of the graves; there are no 'hidden' costs. Following a burial the ground takes time to settle, sometimes up to a year. When required, we top up graves and re-set the plaque. In keeping with the Woodland Burial ethos we encourage wildflowers and meadow grass to cover the exposed ground after a burial.



By Families and Visitors

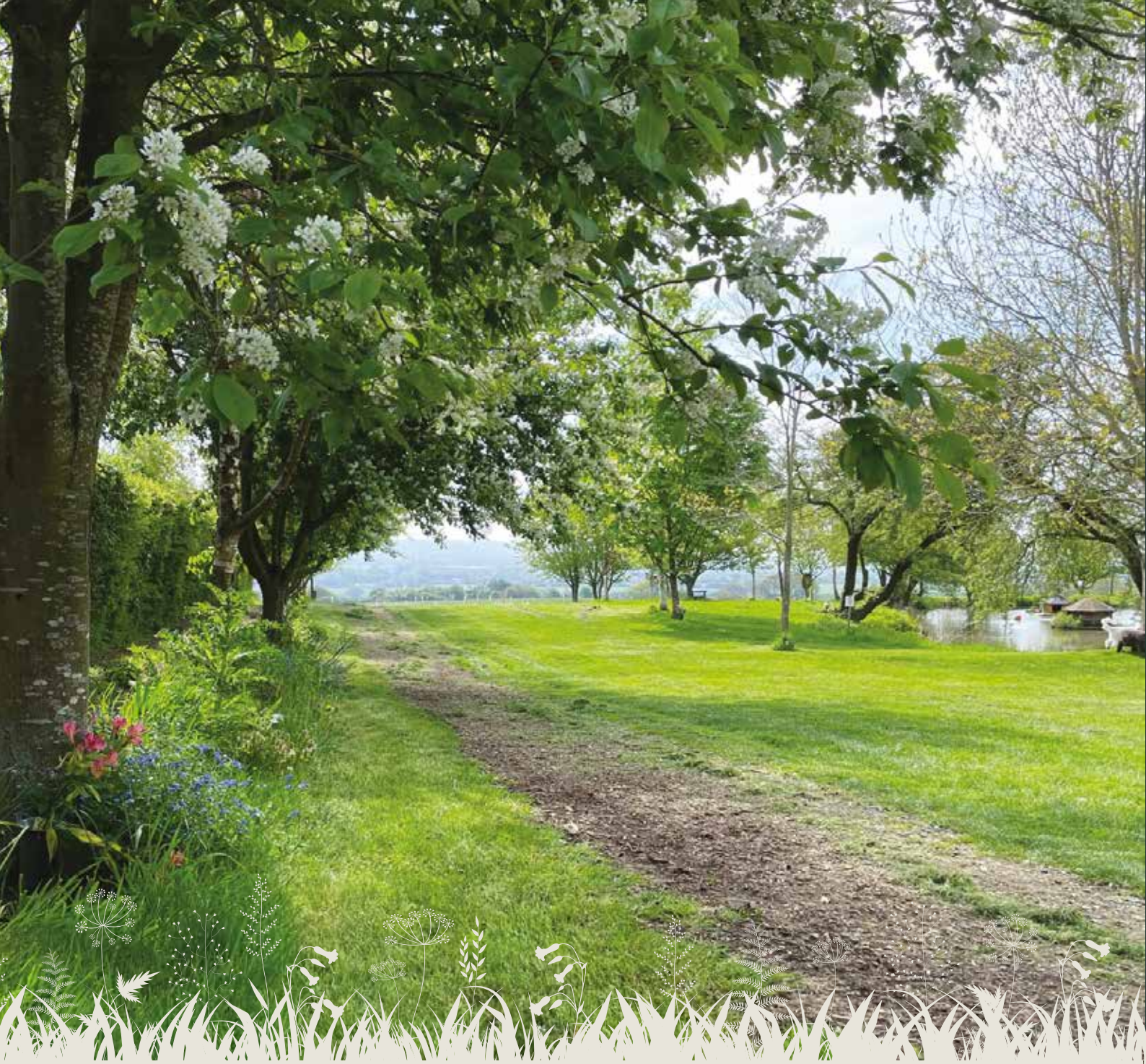
Families are permitted to tend their plot by weeding, planting spring bulbs, planting from our permitted planting list or placing cut flowers into the one vase we supply. To assist with our preferred planting, we employ a regular review of the cemetery grounds and as a result we will remove items that we feel are not in keeping with a woodland environment or are a risk to wildlife.

Grave Maintenance

Please scan our QR code for regulations on Grave Maintenance.







Planting and Trees



Trees

All trees planted at Herongate Wood are native to the UK. All burials are no more than 9 feet from the base of a tree. Families who want an individual tree can purchase 2 full burial 'Avenue' plots. We will endeavour to plant the tree after the first plot is used. All trees and their care at Herongate Wood are the responsibility of the cemetery and its Ground Staff as part of the ongoing Woodland Management.

Planting

We understand that families like to assist with the maintenance of the grave and we support this. To provide some guidance to families regarding appropriate planting at Herongate Wood, we have worked together with a local nursery to provide families with a list of suitable plants.

Planting and Trees

Our preferred plant list can be found by scanning this QR code.



*Together we are creating
your living memorial.*



Memorials and Pre-booking

Memorials

Many families choose to mark their loved ones grave with a personalised Granite Plaque. These plaques are purchased through Herongate Wood. We also provide other kinds of memorials including Tree plaques, Memorial bench plaques and more.

Pre-booking

We offer families the option to plan ahead and reserve burial or ashes plots at Herongate Wood. The price for these plots are fixed the day it is booked. It is our standard practice to reserve at least one adjacent plot for 14 days following a burial. If you would like additional plots to be placed on hold, please let your Funeral Director know at the time of booking to avoid them being allocated to another family. We issue Burial Grant Certificates for each pre-booked plot. This certificate should then be stored with your important documents such as a Will or Insurance Documents.

If you decide you no longer need your plots these can be cancelled without charge, refunding your payment in full.

Funeral Plans

We are Appointed Representatives of Golden Charter and work in partnership with them to provide you with a safe and reliable way to plan ahead. If you would like more information please contact 01277 811064.





Testimonials

“ Herongate Wood is such a peaceful place. The calm way the service was conducted and the lack of time pressure. ”

KEVIN L

“ We both loved the idea of being under the bluebells. The staff were friendly and professional. ”

BARBARA T

“ For such a sad day the service, location, surroundings and staff made it such a beautiful relaxed send off for mum. We have received so many positive comments about the day and know that mum would have been proud. ”

MICHELLE C





“ Excellent, compassionate and helpful advice at a time when we needed it was a life saver. Thank you for your attention to detail. ”

JOHN H

“ My wife and I were both so impressed with the location, the atmosphere, the style and the organisation of our friends funeral, we both said we wanted the same for ourselves. ”

ROBERT B

“ Perfect - Calm and peaceful. Well organised. Helpful in every way. ”

SAMUEL H

“ You not only cared for our loved one but also the surviving family. ”

KAREN R



Herongate Wood Cemetery & Welcome Centre Office

Billericay Road, Brentwood, Essex CM13 3SE

Telephone: 01277 811064

Email: enquiries@herongatewood.co.uk

Opening Hours

Welcome Centre Office: Monday – Saturday 9am to 4.30pm

Herongate Wood Cemetery: 24/7 *

Our Phonelines are manned 24 hours a day, 7 days a week to assist with the loss of a loved one.

*Herongate Wood car park is open from 9am to 4.30pm, access is via a pedestrian gate outside of these times

Adam & Greenwood Funeral Home

Billericay

19 Greens Farm Lane, Billericay,

Essex CM11 2EZ

Telephone: 01277 633085

Chelmsford (Head Office)

185 New London Road, Chelmsford,

Essex CM2 0AE

Telephone: 01245 496620

Maldon

166/168 High Street, Maldon,

Essex CM9 5BX

Telephone: 01621 857172

Email: info@afuneral.co.uk | **Website:** www.afuneral.co.uk | **Opening hours:** Monday to Friday – 9am to 5pm



www.green-burial.co.uk